

Our Team , Staff and Volunteers...at your service.

Hastings-Prince Edward Board of Directors

Jon Leavens	<i>President</i>
Kelly Slawter	<i>Secretary</i>
Barb Royce-Payne	<i>Treasurer</i>
Anita Garland	
Patrick Hurley	
Charmaine Jordan	
Lyn McGowan	
Tom Muir	
Eileen Robbins	
Bev Rosser	
Carol Sayeau	

**For those who love statistics**

Support and Education	Belleville	Prince Edward
Clients on file	895	120
New clients	789	121
Number of group sessions	278	32
Registered Group Participants	1176	142
Number of referrals	353	58
Face to Face	661	111
Phone/email encounters	1877	66
<b>How did our volunteers serve both Societies?</b>		
	<b>2014-2015</b>	<b>2013-2014</b>
Board hours	388	367
Fundraising hours	1463	2837
Office hours	212	526
Client Service	119	387
<small>Because of merging two databases , statistics may not be as accurate as we would like.</small>		

*Thank you for your time and talents in helping the chapter achieve its mission: To alleviate the personal and social consequences of Alzheimer's disease and related dementia, and to promote research.*

**Alzheimer Society Staff Directory 2014-2015**

Laura.Hare	<i>Executive Director</i>	Retired April 30, 2015
Hannah Brown	<i>Fund Development</i>	Resigned Feb 13, 2015
Kristel Nicholas	<i>Education &amp; Support, South Hastings</i>	Kristel.Nicholas@alzheimerhpe.ca
Darlene Jackson	<i>Education &amp; Support, Centre Hastings</i>	Darlene.Jackson@alzheimerhpe.ca
Sarah Krieger	<i>Education &amp; Support, North Hastings</i>	Sarah.Krieger@alzheimerhpe.ca
Sharon Brewster	<i>Education &amp; Support, Brighton/Quinte West</i>	Sharon.Brewster@alzheimerhpe.ca
Barry Flanigan	<i>Education &amp; Support, Prince Edward</i>	Barry.Flanigan@alzheimerhpe.ca
Linda Steacy	<i>Administrative Assistant, Prince Edward</i>	Linda.Steacy@alzheimerhpe.ca



Annual Report

2015-2016

Greetings from the Executive Director

We have had an incredible year of success as the Alzheimer Society of Hastings-Prince Edward. Our Education and Support Coordinators along with our Support and Fund Development Staff have made it possible for our Society to service over \_\_\_\_\_ clients and offer education trainings, workshops and seminars to over 3500 participants throughout our catchment area of Hastings and Prince Edward County and Brighton.

The support of our communities is evident as you read through these pages and see fundraising efforts that have taken place this year. Each and every event was well supported from community participation to an overwhelming show of financial support from Individuals, Businesses, Corporations and Service Clubs. Without their unwavering support we would not be able to offer the services so necessary in our communities.

Dementia is growing exponentially across Ontario. In order for persons with Alzheimer’s disease or other dementias and their caregivers to live well and thrive in their communities, they need to be linked to a community of education, support and quality services YOUR Alzheimer Society provides these services. We could not do it without Staff, Volunteers, Board of Directors and so many Community Partners..

A very heartfelt thank you for making my first year as Executive Director a pleasure. I’ve enjoyed working with and representing you.

Together we can provide Help for Today,. Hope for tomorrow!

Maureen Corrigan, Executive Director  
Alzheimer Society of Hasting–Prince Edward

In Memoriam

THANK YOU

We gratefully acknowledge donations made to the Society in memory of friends and family members. These kind remembrances support our programs and services . Thank you to all who select the local Alzheimer Society as their charity of choice. We offer sincere condolences on your loss. In 2015-2016 donations were received in memory, or in honour, of:

Aartje Edith Korver	Don Lambert	Gregory Joseph Kennedy	Keitha Sopha	Paul Wall
Alex Vandervoort	Donald Casselman	Gwen Glass	Kenneth & Edith Oliver	Percy Knight
Allan Allore	Doreen Meadley	H. C. Deys	Kenneth Kingston	Philip Bennett
Allan Bailey	Dorelle Stinchcombe	Harold & Ethel Vosbough	Kunigunda Fruick	Raymond Goulah
Anna Johnston	Doris Southworth	Harold Hanman	Linda Jackson	Robert (Bob) Reid
Anna Mitts	Doris Whalen	Harold Woodall	Lise Marie Hicks	Robert Gray
Anne Kloostra	Dorothy Irwin	Helen & Charles Morton	Lloyd Barr	Ronald Goodall
Anne Mae Johnston	Dorothy Ollerenshaw	Helen Farrow	Lois Bailey	Ronald Hebden
Anonymous	Doug Harris	Helen Greenlee	Lois Conley	Rosemary Hudson
Arhea Lalonde	Doug Hopkins	Helen Irwin	Lois Reynolds	Roy Jeffrey
Arlene Dodds	Doug Waddell	Helen Jean Farrow	Mabel Larin	Roy Sanderson
Arlene Neal	Douglas Clare	Helen Rozniak	Malcolm Banks	Roy Trumpour
Arlie Bigg	Douglas Hopkin	Herbert Pragnell	Margaret Baker	Ruth Hulsman
Arnold Hennessy	Eileen Byrd & Ralph Thompson	Hugh Lyons	Margaret Ryan	Ruth Rodger
Arnold Peister	Eileen Sopaz	Iona Wager	Margaret Titanic	Ruth Ross
Arthur Heard	Ejgil "Joe" Johansen	Irene Knight	Margo Douglas	Sandra Brownson
Audrey Smith	Elda Marshall	Isabelle Shelley	Maria Di Tomaso	Sandra Foster
Avryl Temple	Elizabeth Arnold	Isabel Wright	Marie Kavanaugh	Shirley Bird
Barb Hoskin	Elizabeth Debicki	Iva May Howard	Marie Pohl	Shirley Corey
Barbara Leeder	Elizabeth Quickert	James Westlake	Marjorie Harrison	Shirley Nicol
Barclay Whyte	Ellen Nix	Jean Allison	Marjorie McFall	sister Ruth
Bernard Murphy	Eric Cook	Jean Thomas	Mary Ellen Maxley Dearman	Stan Uens
Bessie Moses-Paul	Eugenia Georgakopoulos	Jessie Harper	Mary Lessard	Stella Savoie
Beth	Euphemia Cameron	Jim Whitehead	Mary Meagher	Steven Vourg
Bettyanne Leverton	Florence Bird	Joan Field	Mary O'Connor	Suzanne Freeman
Bill Mossman	Frances Morrin	Joan Thissen	Mary Smith	Sylvia McNish Costner
Bill Paterson	Francine Bernard	Joe and Ilene Sopaz	Murney Green	Thelma Branscome
Bill Sowden	Fred Welsh	John Desjardins	Nellie Burn	Thomas McMullan
Bill Wise	Garry Goodfellow	John Gee	Nettie Brownlee	Trevor Davis
Bob Rodgers	George Perry	John Moorcroft	Norma Cooper	Ursula Stierle
Bruce Allen Kemp	Geraldine Coffey	John Sibthorpe	Norma Stringer	Velma Jean Taylor
Bruce Westfall	Geraldine Lane	John Tokarewicz	Norman Keech	Vera Vanstone
Carol Webster	Gizella Bartok	John Van Heukelom	Partick Whyte	Viola Liddle
Cecil March	Gladys Scott	Joseph MacDonald	Pat McKeown	Vivian Trotter
Cecil Rudderham	Gladys Sriver	Joyce LaForce	Patricia Reed	Winnie Locklin
Cecil Spence	Gordon Slack	June Gillespie	Patricia Trumble	your remembered one
Daniel Gallagher	Grant Devolin	Keith Helm	Patrick Whyte	Zelda Brawley
		Keith Willman		



Help for Today

2015-2016

A Tribute to our Supporters

THANK YOU!

With only 35% of our budgets funded by government grants, community support is crucial to the provision of programs and services to families traveling the dementia journey. We thank all our donors, large and small, and pay tribute to those who have sponsored our activities at a \$500+ level.

Albert College	Estate of Joan Eleanor Scott	Leslie MacDonald
Anonymous	Giant Tiger	Parrott Foundation
Arlene Wright	Helen Oliver	Sears Employees' Charitable Fund
Burrows-Colden Family Foundation	Hurley Law LLP	Seasons Retirement Communities
Canadian Tire	Hydro One	Stirling Manor
Crown Ridge Health Care Services Inc	Investors Group Matching Gift Program	Students of Loyalist College PR Program
D.E. McCullough Enterprises Ltd Staff funds	J.L. Wilson & Sons, Div. of Carmichael	Township of Stirling-Rawdon
Eric Reynolds	Julie Lange, Scotia McLeod	Trenton Cold Storage Ltd
Estate of Bernard Yardley	King Street United Church	Trenton Lions Club

OPP Community Room

As Education and Support Co-ordinator Sharon Brewster was talking with OPP staff in Trenton about matters relating to dementia, she received welcome news—that the Society could make use of the OPP Community Room in Trenton at no charge. Sharon works out of a home office and sometimes finds it difficult to meet with families, especially if a home visit is not an option. The Community Room solves this issue for Sharon and we thank the Quinte West OPP very much.



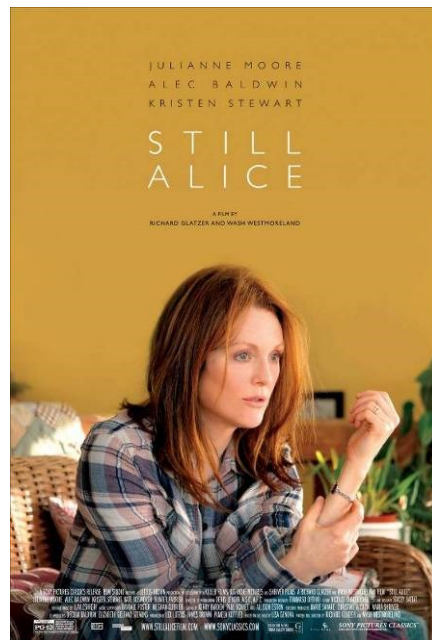
NOW is the time to TAKE CHARGE of your FUTURE.

Take charge of your life by planning for the future. Having a WILL and POWER OF ATTORNEY ensures that your wishes for the future are known. From November 17-28 Hurley Law LLP is donating proceeds from the preparation of WILLS and POWERS OF ATTORNEY to the Alzheimer Society. Simply mention this ad when you make an appointment.

For more information and to make an appointment:  
Hurley Law LLP - 613.966.4614  
112 Front St., Belleville, ON



A special thank you to Hurley Law LLP who contributed both time and money to the Alzheimer Society. In November, they donated proceeds from the preparation of wills and powers of attorney to the Society. In March, they sponsored a reception prior to the showing of Still Alice at the Empire Theatre. The reception provided a venue for the Society to thank all its supporters and for clients, volunteers and staff to reconnect, especially those who had not been involved recently with the Society. To top it off, Patrick Hurley sits on the Society's board, bringing his professional skills and insight to decision-making.



Help for Today

Community Involvement

The Alzheimer Society cannot work without community partners. Here are a few of the projects we've been involved in this year.

BEHAVIOUR SUPPORT TRANSITIONAL UNIT (BSTU)

This unit is on the 4th floor of the new Sills Wing of Quinte Healthcare, Belleville site. Its purpose is to help people with behaviours that are causing difficulty for caregivers—either in long term care or at home. In 2014-2015, there were numerous meetings for the development of the unit's design: the referral process, use of volunteers, intake proceedings, care plan development, discharge planning, caregiver issues etc. The Unit opened in the spring of 2015. The Education and Support Co-ordinators had the opportunity to visit the unit, so they will be able to share information about the Unit with the families they serve. The Unit receives referrals from across the LHIN (from beyond Brockville to Brighton, from Bancroft to the County), so the local Society may need to support caregivers from away who are looking for information locally.

PROJECT LIVESAVER

The Alzheimer Society of Hastings-Prince Edward (ASHPE) is proud to be working in partnership with local O.P.P. and municipal Police detachments to offer With the support of Quinte West Community Policing the purchase of the equipment was made possible and the program is up and running. In Bancroft the Alzheimer Society had the support of the BacPac Program(their community policing organization) to again purchase the necessary equipment and their program will be up and running for 2016 once their officer training takes place.

- In 2011 it was reported that 15% of Canadians aged 65 years and older were living with Alzheimer disease and other dementias.
- 60% of those individuals will wander away from home at least once
- 50% of those not found within 24 hours are at risk of serious injury or even death

This is where ASHPE is stepping in to help by offering Project Lifesaver to local individuals who are at risk of wandering.

The mission of Project Lifesaver is to provide timely response to save lives and reduce potential injury. Project Lifesaver combines radio technology with trained police services to save time and most importantly, bring your loved one home safe.



Education & Support

The Society’s Education and Support Coordinators have been inspired to reach more families in different ways. Here is the summary of the programs we are able to offer thanks to the generosity of our community:

Support Programs

**Circle of Friends: Early Stage Support Group**

This group has been specifically designed for individuals in the early stages of Alzheimer’s disease or a related dementia. Circle of Friends provides an opportunity for those with a mild memory loss to meet others who are experiencing similar difficulties and exchange information in a supportive environment.

**Memory Boost—?**

**Plate Mates**

Plate Mates is a monthly lunch outing for those living with memory loss, their families and partners in care. It takes place in restaurants throughout communities in our catchment area giving all our clients the ability to participate.

**Partners in Care**

These support groups give caregivers a place to talk with other partners in care who understand the disease and know what each other are going through. There are 10 support groups for partners in care held monthly within our catchment area.

**Memory Café**

Memory Café is a social gather where people with memory loss and those who care about them come together in a safe and engaging environment. The Memory Café is a non-judgmental atmosphere where concerns can be shared without risk of embarrassment. It is a loosely structured gathering, with a positive focus and it offers refreshments, information, and much more.

**T.R.E.N.D.S**

TRENDS is an informal group that meets monthly to discuss seniors health, healthy aging, managing memory and dementia. The program aims to provide information about local supports and services, and help people access these services as their needs increase.

Special Events Highlights

Special Events Top Ten

	2015-2016	2014-2015
Belleville/Trenton Walk for Memories		\$ 60888
Coffee Break—Belleville-Hastings-Quinte		\$ 29256
Bancroft Walk for Memories		\$ 27851
Barcovan Golf Event		\$ 17144
Book Sales—February, June, November		\$ 12094
Picton Walk for Memories		\$ 10450
Wellington Golf Event		\$ 6799
Coffee Break—Prince Edward County		\$ 6652
Evening to Remember Raffle		\$ 4134
Tag Day—Prince Edward County		\$ 3488

FUND DEVELOPMENT

Book Sale



The volunteers at the Alzheimer Society of Hastings-Prince Edward have been running used book sales in Belleville since 1989. The community has learned that the Society is the place to go when weeding out bookshelves at home. Every single day, we receive donations of books - sometimes one or two singles, sometimes five or six boxes! Volunteers come in on a regular basis to sort through the donations, sorting them into fiction/non-fiction, soft cover/hardcover and finding some gems for themselves along the way



Education & Support

Education Programs

**Care Essentials: a focus on communication and behavior**

Care Essentials provides an opportunity to learn and share with others who are supporting a family member or friend who is living with dementia. Topics covered in Care Essentials address issues commonly faced by Care Partners who are supporting someone in the middle stages of dementia.

**Welcome to My World**

Welcome to my World is an interactive workshop that allows participants to experience some of the cognitive and physical challenges associated with aging and dementia and recognize how dementia impacts daily tasks.

**In My Shoes**

In My Shoes is a dementia care workshop for family caregivers that can be an eye-opener

**Finding Your Way**

This project required the Society to hold a community meeting involving police services, community support services and government services. The purpose was to highlight the importance of being prepared for persons with dementia to go missing. Attendees at both meetings were inspired to keep going—to make their communities safer, both to prevent someone from going missing and to find them quickly when they do. This has led to interest in getting Project Lifesaver installed in our communities—another task for the upcoming year.



**A Changing Melody**

A Changing Melody is a unique conference or forum in which the role of the professional, who organized it, is to partner with the persons with dementia and their family partners in care. The professional is there to empower and encourage active participation. In particular the voices of the persons with dementia must be at the forefront of the forum and included in all the decision-making.

Education & Support

Music Therapy

**Tune In**

Tune In is a music therapy program offered for individuals, both people with dementia and the caregiver, and is intended to provide some relief from the stress, anxiety and confusion dementia can cause. This program was funded by the Bridge Street United Church Foundation.



**Music For Me**

Music For Me is a music therapy program that is available at Bancroft and is similar to the Tune In project. Music For Me is founded on the same principles as Tune In, which is to provide some kind of relief for both the caregiver and the person with dementia. Music For Me is funded by the Mormons' Memorial Fund.



FUND DEVELOPMENT

Walk for Memories to Walk for Alzheimer's

Trenton Walk for Alzheimer's



On January 31st, 2016 Trenton held their first Walk for Alzheimer's at the Quinte West YMCA. The Trenton Walk for Alzheimer's raised over \$10,000!

Thank you to our sponsors!



FUND DEVELOPMENT

Walk for Memories to Walk for Alzheimer's

Bancroft Walk for Alzheimer's



On January 30th, 2016, Bancroft held their 6th annual Walk for Alzheimer's at North Hastings High School. The Bancroft Walk for Alzheimer's raised over \$26,000!

Thank you to our sponsors!

PLATINUM



Leveque Brothers

GOLD



337 HASTINGS ST. N. 613-332-6664 BANCROFT



Kathy Tripp O'Shaughnessy in Memory of Joyce O'Shaughnessy



Tim and Cathy Fulford



SILVER



KELLY HOMES & COTTAGES Custom Carpentry

BRONZE

S. Tait Homes Pappy Auto Sales & Service Auto Clinic Alice's Pantry

Education & Support

Rediscover Me Caregiver Retreats



October 2, 2015  
Isaiah Tubbs Resort  
in Prince Edward



February 26, 2016  
CrossRoads To Care  
Bay View Mall  
Belleville

We held our spring Caregiver Retreat on Friday, February 26, 2016 with great success! Caregivers came from all throughout our service area to enjoy a day to rediscover themselves. From games, to pampering reflexology and therapeutic touch, or just a quiet space to regroup, there was a variety of activities to choose from. Lunch was provided by Sans Souci. We hope you enjoyed yourselves, and we look forward to seeing you in the Fall. Once again, many thanks to the volunteer facilitators who provided special moments of rest and relaxation for these very deserving participants.



**VOLUNTEERS**

**Building a Strong Volunteer Program**

Thanks to the hard work of Jannette Cox', Program Support and Administration, starting January 2016 the ASHPE started a formal volunteer orientation process. ASHPE uses informal exchange of information between the Society and its volunteers with a goal to inform and engage interest/involvement with volunteer for a current volunteer opportunities. We now hold regular volunteer orientation sessions.



**WE** ❤️ **VOLUNTEERS**



**FUND DEVELOPMENT**

**Walk for Memories to Walk for Alzheimer's**

**Picton Walk for Alzheimer's**



On January 30th, 2016 Picton held their first Walk for Alzheimer's at Prince Edward Colligate Institute. The Picton Walk for Alzheimer's raised over \$7000!

Thank you to our sponsors!





FUND DEVELOPMENT

Walk for Memories to Walk for Alzheimer's

The Alzheimer Society of Hastings-Prince Edward changed over from the Walk for Memories to the Walk for Alzheimer's to fight the stigma that is associated with the label of 'Alzheimer' . The name, logo, and the time of year of for the walk changed for some locations, but one important thing did not, that is all the money that was raised at the Walk for Alzheimer's stays within our community.

Wellington Walk for Alzheimer's



On June 13th, 2015 the Alzheimer Society of Hastings-Prince Edward held their first Walk for Alzheimer's in Wellington, Prince Edward County.

Thank you to our sponsors!



Ainsworth Funeral Home

East & Main Bistro

VOLUNTEERS

Volunteer Appreciation Lunch

In celebration of April's National Volunteer Week, ASHPE staff was pleased to host an appreciation luncheon on Friday April 15, 2016.

The event was well attended; we were thrilled to see so many faces that have supported us in countless ways over the years. From special events and fundraising to book room organizing and office support, we sincerely value all of the contributions made by each and every individual.



Thank You!



At this time, we took the opportunity to recognize the on-going offerings of Mary Hobbs (left picture) who was unanimously selected as our Volunteer of the Year for 2015. Mary has been invaluable in supporting our main office through this past year of transition. We sincerely thank her for her dedication, her knowledge of our operating systems and most importantly for her patience with us!

Volunteers play such an important role in our Society and in our community...in fact, they are the most important resource that community organizations, such as ours, have. By offering specialized skills, fresh perspectives, constructive feedback and refreshing energy, each and every one of you are making a positive impact in the lives of others .

To all of our volunteers who so generously donate their time and talents to our Society, please accept our heartfelt thanks - thank you today and every day for being part of our amazing Alzheimer's Society Hasting - Prince Edward family.

FUND DEVELOPMENT

SHAKEN NOT STIRRED



We would like to thank everyone who made it out to our “Bond and Beyond” themed Shaken Not Stirred Ladies Night Out event on Wednesday March 30<sup>th</sup>. It was a wonderful night, and we hope everyone had as much fun as we did! Together, we raised over **\$21,000**. We would like to thank our sponsors, volunteers, donors and attendees for supporting this event, and for supporting your local Alzheimer Society! We hope to see you all again next year!

FUND DEVELOPMENT

SHAKEN NOT STIRRED

Thank you to our sponsors!

